

## DAPK2(Phospho Ser318) Polyclonal Antibody

### Description

<b>Product type</b>	Primary Antibody
<b>Code</b>	BT-AP15182
<b>Host</b>	Rabbit
<b>Isotype</b>	IgG
<b>Size</b>	20ul, 50ul, 100ul
<b>Immunogen</b>	The antiserum was produced against synthesized peptide derived from human DAPK2 around the phosphorylation site of Ser318. AA range:284-333
<b>Mol wt</b>	42898
<b>Species reactivity</b>	Human, Mouse, Rat
<b>Clonality</b>	Polyclonal
<b>Recommended application</b>	IHC-p, IF, ICC, ELISA
<b>Concentration</b>	1 mg/ml
<b>Full name</b>	Death-associated protein kinase 2
<b>Synonyms</b>	Death-associated protein kinase 2; DAPK2; Death-associated protein kinase 2; DAP kinase 2; DAP-kinase-related protein 1; DRP-1

**This product is for research use only, not for use in human, therapeutic or diagnostic procedure.**

### Background

This gene encodes a protein that belongs to the serine/threonine protein kinase family. This protein contains a N-terminal protein kinase domain followed by a conserved calmodulin-binding domain with significant similarity to that of death-associated protein kinase 1 (DAPK1), a positive regulator of programmed cell death. Overexpression of this gene was shown to induce cell apoptosis. It uses multiple polyadenylation sites.

### Recommended Dilution

IHC-p: 1: 100 - 1: 300

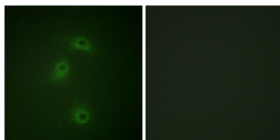
IF: 1: 200 - 1: 1000

ICC: 1: 200 - 1: 1000

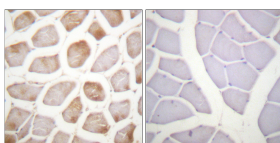
ELISA: 1: 5000

Not yet tested in other applications.

### Images



Immunofluorescence analysis of COS7 cells, using DAPK2 (Phospho-Ser318) Antibody. The picture on the right is blocked with the phospho peptide.



Immunohistochemistry analysis of paraffin-embedded human skeletal muscle, using DAPK2 (Phospho-Ser318) Antibody. The picture on the right is blocked with the phospho peptide.

### Storage

-20°C for 1 year

501 Changsheng S Rd, Nanhu Dist, Jiaxing, Zhejiang, China

Tel: 86 21 31007137 | E-mail: [save@bt-laboratory.com](mailto:save@bt-laboratory.com) | [www.bt-laboratory.com](http://www.bt-laboratory.com)