

DBP Polyclonal Antibody

Description

Product type	Primary Antibody
Code	BT-AP15185
Host	Rabbit
Isotype	IgG
Size	20ul, 50ul, 100ul
Immunogen	Synthesized peptide derived from DBP . at AA range: 90-170
Mol wt	N/A
Species reactivity	Human, Monkey
Clonality	Polyclonal
Recommended application	WB, ELISA
Concentration	1 mg/ml
Full name	Vitamin D-binding protein
Synonyms	Vitamin D-binding protein; GC; Vitamin D-binding protein; DBP; VDB; Gc-globulin; Group-specific component

This product is for research use only, not for use in human, therapeutic or diagnostic procedure.

Background

The protein encoded by this gene belongs to the albumin gene family. It is a multifunctional protein found in plasma, ascitic fluid, cerebrospinal fluid and on the surface of many cell types. It binds to vitamin D and its plasma metabolites and transports them to target tissues. Alternatively spliced transcript variants encoding different isoforms have been found for this gene.

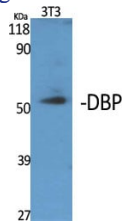
Recommended Dilution

WB: 1: 500 - 1: 2000

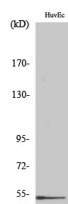
ELISA: 1: 40000

Not yet tested in other applications.

Images



Western Blot analysis of various cells using DBP Polyclonal Antibody



Western Blot analysis of COS7 cells using DBP Polyclonal Antibody

Storage

-20°C for 1 year

501 Changsheng S Rd, Nanhu Dist, Jiaxing, Zhejiang, China

Tel: 86 21 31007137 | E-mail: save@bt-laboratory.com | www.bt-laboratory.com