

DDR2 Polyclonal Antibody

Description

Product type	Primary Antibody
Code	BT-AP15204
Host	Rabbit
Isotype	IgG
Size	20ul, 50ul, 100ul
Immunogen	Synthetic peptide from human protein at AA range: 31-80
Mol wt	N/A
Species reactivity	Human, Mouse
Clonality	Polyclonal
Recommended application	IF, ICC, IHC-p, ELISA
Concentration	1 mg/ml
Full name	Discoidin domain-containing receptor 2
Synonyms	Discoidin domain-containing receptor 2 ;Discoidin domain receptor 2;EC 2.7.10.1;CD167 antigen-like family member B;Discoidin domain-containing receptor tyrosine kinase 2;Neurotrophic tyrosine ; Discoidin domain-containing receptor 2; Discoidin domain receptor 2; EC 2.7.10.1; CD167 antigen-like family member B; Discoidin domain-containing receptor tyrosine kinase 2; Neurotrophic tyrosine kinase, receptor-related 3; Receptor protein-tyrosine kinase TKT; Tyrosine-protein kinase TYRO10; CD antigen CD167b

This product is for research use only, not for use in human, therapeutic or diagnostic procedure.

Background

Receptor tyrosine kinases (RTKs) play a key role in the communication of cells with their microenvironment. These molecules are involved in the regulation of cell growth, differentiation, and metabolism. In several cases the biochemical mechanism by which RTKs transduce signals across the membrane has been shown to be ligand induced receptor oligomerization and subsequent intracellular phosphorylation. This autophosphorylation leads to phosphorylation of cytosolic targets as well as association with other molecules, which are involved in pleiotropic effects of signal transduction. RTKs have a tripartite structure with extracellular, transmembrane, and cytoplasmic regions. This gene encodes a member of a novel subclass of RTKs and contains a distinct extracellular region encompassing a factor VIII-like domain. Alternative splicing in the 5' UTR results in multiple transcr

Recommended Dilution

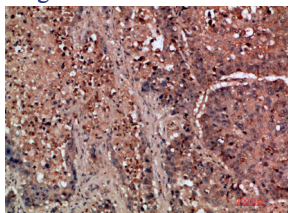
IHC-p: 1: 50 - 1: 200

IF: 1: 500

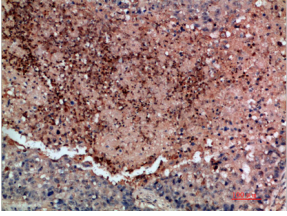
ELISA: 1: 10000 - 1: 20000

Not yet tested in other applications.

Images



Immunohistochemical analysis of paraffin-embedded human-lung-cancer, antibody was diluted at 1:200



Immunohistochemical analysis of paraffin-embedded human-lung-cancer, antibody was diluted at 1:200

Storage

-20°C for 1 year

501 Changsheng S Rd, Nanhu Dist, Jiaxing, Zhejiang, China

Tel: 86 21 31007137 | E-mail: save@bt-laboratory.com | www.bt-laboratory.com