

TSP50 Polyclonal Antibody

Description

Product type	Primary Antibody
Code	BT-AP15215
Host	Rabbit
Isotype	IgG
Size	20ul, 50ul, 100ul
Immunogen	Synthesized peptide derived from human protein . at AA range: 50-130
Mol wt	N/A
Species reactivity	Human, Mouse
Clonality	Polyclonal
Recommended application	WB, ELISA
Concentration	1 mg/ml
Full name	Probable threonine protease PRSS50
Synonyms	Probable threonine protease PRSS50 ;EC 3.4.25.-;Cancer/testis antigen 20;Serine protease 50;Testis-specific protease-like protein 50

This product is for research use only, not for use in human, therapeutic or diagnostic procedure.

Background

Although related to peptidase S1 family, lacks the conserved active Ser residue in position 310 which is replaced by a Thr, suggesting that it has no protease activity.,miscellaneous:DNA hypomethylation is accompanied by the expression of the gene in the testis.,Belongs to the peptidase S1 family.,Contains 1 peptidase S1 domain.,tissue specificity:Testis specific. Differentially expressed in some breast cancer tissues.,

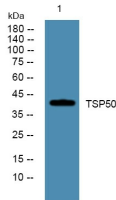
Recommended Dilution

WB: 1: 500 - 1: 2000

ELISA: 1: 5000 - 1: 20000

Not yet tested in other applications.

Images



Western blot analysis of lysates from PC12 cells, primary antibody was diluted at 1:1000, 4°C overnight

Storage

-20°C for 1 year