

## DERL3 Polyclonal Antibody

### Description

<b>Product type</b>	Primary Antibody
<b>Code</b>	BT-AP15219
<b>Host</b>	Rabbit
<b>Isotype</b>	IgG
<b>Size</b>	20ul, 50ul, 100ul
<b>Immunogen</b>	Synthesized peptide derived from part region of human protein
<b>Mol wt</b>	N/A
<b>Species reactivity</b>	Human, Mouse
<b>Clonality</b>	Polyclonal
<b>Recommended application</b>	WB, ELISA
<b>Concentration</b>	1 mg/ml
<b>Full name</b>	Derlin-3
<b>Synonyms</b>	Derlin-3 ;Degradation in endoplasmic reticulum protein 3;DERtrin-3;Der1-like protein 3

This product is for research use only, not for use in human, therapeutic or diagnostic procedure.

### Background

The protein encoded by this gene belongs to the derlin family, and resides in the endoplasmic reticulum (ER). Proteins that are unfolded or misfolded in the ER must be refolded or degraded to maintain the homeostasis of the ER. This protein appears to be involved in the degradation of misfolded glycoproteins in the ER. Several alternatively spliced transcript variants encoding different isoforms have been identified for this gene.

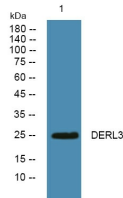
### Recommended Dilution

WB: 1: 500 - 1: 2000

ELISA: 1: 5000 - 1: 20000

Not yet tested in other applications.

### Images



Western blot analysis of lysates from U2OS cells, primary antibody was diluted at 1:1000, 4°C overnight

### Storage

-20°C for 1 year