

## DIRA3 Polyclonal Antibody

### Description

Product type	Primary Antibody
Code	BT-AP15239
Host	Rabbit
Isotype	IgG
Size	20ul, 50ul, 100ul
Immunogen	Synthesized peptide derived from part region of human protein
Mol wt	N/A
Species reactivity	Human, Rat, Mouse
Clonality	Polyclonal
Recommended application	WB, ELISA
Concentration	1 mg/ml
Full name	GTP-binding protein Di-Ras3
Synonyms	GTP-binding protein Di-Ras3 ;Distinct subgroup of the Ras family member 3;Rho-related GTP-binding protein Rho1

This product is for research use only, not for use in human, therapeutic or diagnostic procedure.

### Background

This gene encodes a member of the ras superfamily. This gene is imprinted gene with monoallelic expression of the paternal allele which is associated with growth suppression. The encoded protein acts as a tumor suppressor whose function is abrogated in many ovarian and breast cancers. This protein may also play a role autophagy in certain cancer cells by regulating the autophagosome initiation complex.

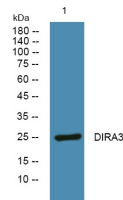
### Recommended Dilution

WB: 1: 500 - 1: 2000

ELISA: 1: 5000 - 1: 20000

Not yet tested in other applications.

### Images



Western blot analysis of lysates from SH-SY5Y cells, primary antibody was diluted at 1:1000, 4°C overnight

### Storage

-20°C for 1 year