

DMRTD Polyclonal Antibody

Description

Product type	Primary Antibody
Code	BT-AP15250
Host	Rabbit
Isotype	IgG
Size	20ul, 50ul, 100ul
Immunogen	Synthesized peptide derived from human protein . at AA range: 10-90
Mol wt	N/A
Species reactivity	Human, Rat, Mouse
Clonality	Polyclonal
Recommended application	WB, ELISA
Concentration	1 mg/ml
Full name	Doublesex- and mab-3-related transcription factor C2
Synonyms	Doublesex- and mab-3-related transcription factor C2

This product is for research use only, not for use in human, therapeutic or diagnostic procedure.

Background

May be involved in sexual development.,Belongs to the DMRT family.,Contains 1 DM DNA-binding domain.,tissue specificity:Expressed in testis and pancreas.,

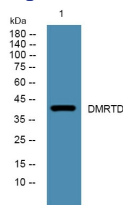
Recommended Dilution

WB: 1: 500 - 1: 2000

ELISA: 1: 5000 - 1: 20000

Not yet tested in other applications.

Images



Western blot analysis of lysates from Jarkat cells, primary antibody was diluted at 1:1000, 4°C overnight

Storage

-20°C for 1 year

501 Changsheng S Rd, Nanhu Dist, Jiaxing, Zhejiang, China

Tel: 86 21 31007137 | E-mail: save@bt-laboratory.com | www.bt-laboratory.com