

Tyrosine Hydroxylase Polyclonal Antibody

Description

Product type	Primary Antibody
Code	BT-AP15265
Host	Rabbit
Isotype	IgG
Size	20ul, 50ul, 100ul
Immunogen	Synthesized peptide derived from human Tyrosine Hydroxylase Polyclonal
Mol wt	N/A
Species reactivity	Human, Mouse, Rat
Clonality	Polyclonal
Recommended application	WB, ELISA
Concentration	1 mg/ml
Full name	Tyrosine 3-monooxygenase
Synonyms	Tyrosine 3-monooxygenase ;EC 1.14.16.2;Tyrosine 3-hydroxylase;TH; Tyrosine 3-monooxygenase; EC 1.14.16.2; Tyrosine 3-hydroxylase; TH

This product is for research use only, not for use in human, therapeutic or diagnostic procedure.

Background

The protein encoded by this gene is involved in the conversion of tyrosine to dopamine. It is the rate-limiting enzyme in the synthesis of catecholamines, hence plays a key role in the physiology of adrenergic neurons. Mutations in this gene have been associated with autosomal recessive Segawa syndrome. Alternatively spliced transcript variants encoding different isoforms have been noted for this gene.

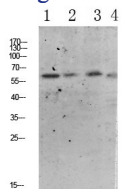
Recommended Dilution

WB: 1: 500 - 1: 2000

ELISA: 1: 10000 - 1: 20000

Not yet tested in other applications.

Images



1 mouse-brain
2 CACO2
3 3T3
4 customer's

Western blot analysis of various lysate, antibody was diluted at 1000. Secondary antibody was diluted at 1:20000

Storage

-20°C for 1 year