

## UB2Q2 Polyclonal Antibody

### Description

Product type	Primary Antibody
Code	BT-AP15286
Host	Rabbit
Isotype	IgG
Size	20ul, 50ul, 100ul
Immunogen	Synthesized peptide derived from part region of human protein
Mol wt	N/A
Species reactivity	Human, Mouse
Clonality	Polyclonal
Recommended application	WB, ELISA
Concentration	1 mg/ml
Full name	Ubiquitin-conjugating enzyme E2 Q2
Synonyms	Ubiquitin-conjugating enzyme E2 Q2 ;EC 6.3.2.19;Ubiquitin carrier protein Q2;Ubiquitin-protein ligase Q2

This product is for research use only, not for use in human, therapeutic or diagnostic procedure.

### Background

Catalytic activity:ATP + ubiquitin + protein lysine = AMP + diphosphate + protein N-ubiquityllysine.,Catalyzes the covalent attachment of ubiquitin to other proteins.,pathway:Protein modification; protein ubiquitination.,Belongs to the ubiquitin-conjugating enzyme family.,tissue specificity:Detected in hypopharyngeal head and neck squamous cell carcinoma, in tumor masses and invasive epithelium.,

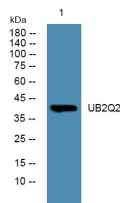
### Recommended Dilution

WB: 1: 500 - 1: 2000

ELISA: 1: 5000 - 1: 20000

Not yet tested in other applications.

### Images



Western blot analysis of lysates from U2OS cells, primary antibody was diluted at 1:1000, 4°C overnight

### Storage

-20°C for 1 year