

UB2R2 Polyclonal Antibody

Description

Product type	Primary Antibody
Code	BT-AP15287
Host	Rabbit
Isotype	IgG
Size	20ul, 50ul, 100ul
Immunogen	Synthesized peptide derived from part region of human protein
Mol wt	N/A
Species reactivity	Human, Mouse
Clonality	Polyclonal
Recommended application	WB, ELISA
Concentration	1 mg/ml
Full name	Ubiquitin-conjugating enzyme E2 R2
Synonyms	Ubiquitin-conjugating enzyme E2 R2 ;EC 6.3.2.19;Ubiquitin carrier protein R2;Ubiquitin-conjugating enzyme E2-CDC34B;Ubiquitin-protein ligase R2

This product is for research use only, not for use in human, therapeutic or diagnostic procedure.

Background

Protein kinase CK2 is a ubiquitous and pleiotropic Ser/Thr protein kinase involved in cell growth and transformation. This gene encodes a protein similar to the E2 ubiquitin conjugating enzyme UBC3/CDC34. Studies suggest that CK2-dependent phosphorylation of this ubiquitin-conjugating enzyme functions by regulating beta-TrCP substrate recognition and induces its interaction with beta-TrCP, enhancing beta-catenin degradation.

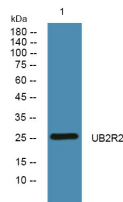
Recommended Dilution

WB: 1: 500 - 1: 2000

ELISA: 1: 5000 - 1: 20000

Not yet tested in other applications.

Images



Western blot analysis of lysates from SW480 cells, primary antibody was diluted at 1:1000, 4°C overnight

Storage

-20°C for 1 year