

Dok-1(Phospho Tyr362) Polyclonal Antibody

Description

Product type	Primary Antibody
Code	BT-AP15289
Host	Rabbit
Isotype	IgG
Size	20ul, 50ul, 100ul
Immunogen	The antiserum was produced against synthesized peptide derived from human p62 Dok around the phosphorylation site of Tyr362. AA range:329-378
Mol wt	52392
Species reactivity	Human, Mouse, Rat
Clonality	Polyclonal
Recommended application	WB, IF, ICC, ELISA
Concentration	1 mg/ml
Full name	Docking protein 1
Synonyms	Docking protein 1; DOK1; Docking protein 1; Downstream of tyrosine kinase 1; p62;dok; pp62

This product is for research use only, not for use in human, therapeutic or diagnostic procedure.

Background

The protein encoded by this gene is part of a signal transduction pathway downstream of receptor tyrosine kinases. The encoded protein is a scaffold protein that helps form a platform for the assembly of multiprotein signaling complexes. Several transcript variants encoding different isoforms have been found for this gene.

Recommended Dilution

WB: 1: 500 - 1: 2000

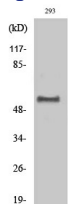
IF: 1: 200 - 1: 1000

ICC: 1: 200 - 1: 1000

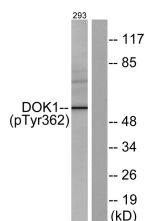
ELISA: 1: 10000

Not yet tested in other applications.

Images



Western Blot analysis of various cells using Phospho-Dok-1 (Y362) Polyclonal Antibody



Western blot analysis of lysates from 293 cells, using p62 Dok (Phospho-Tyr362) Antibody. The lane on the right is blocked with the phospho peptide.

Storage

-20°C for 1 year

501 Changsheng S Rd, Nanhu Dist, Jiaxing, Zhejiang, China

Tel: 86 21 31007137 | E-mail: save@bt-laboratory.com | www.bt-laboratory.com