

Dok-2(Phospho Tyr299) Polyclonal Antibody

Description

| | |
|--------------------------------|---|
| Product type | Primary Antibody |
| Code | BT-AP15290 |
| Host | Rabbit |
| Isotype | IgG |
| Size | 20ul, 50ul, 100ul |
| Immunogen | The antiserum was produced against synthesized peptide derived from human p56 Dok-2 around the phosphorylation site of Tyr299. AA range:266-315 |
| Mol wt | 45379 |
| Species reactivity | Human, Mouse, Monkey |
| Clonality | Polyclonal |
| Recommended application | WB, IF, ICC, ELISA |
| Concentration | 1 mg/ml |
| Full name | Docking protein 2 |
| Synonyms | Docking protein 2; DOK2; Docking protein 2; Downstream of tyrosine kinase 2; p56;dok-2 |

This product is for research use only, not for use in human, therapeutic or diagnostic procedure.

Background

The protein encoded by this gene is constitutively tyrosine phosphorylated in hematopoietic progenitors isolated from chronic myelogenous leukemia (CML) patients in the chronic phase. It may be a critical substrate for p210(bcr/abl), a chimeric protein whose presence is associated with CML. This encoded protein binds p120 (RasGAP) from CML cells.

Recommended Dilution

WB: 1: 500 - 1: 2000

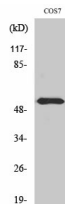
IF: 1: 200 - 1: 1000

ICC: 1: 200 - 1: 1000

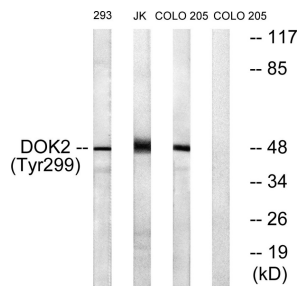
ELISA: 1: 20000

Not yet tested in other applications.

Images



Western Blot analysis of various cells using Phospho-Dok-2 (Y299) Polyclonal Antibody



Western blot analysis of lysates from COS7 cells treated with insulin 0.01U/ml 15', Jurkat cells treated with insulin 0.01U/ml 15' and 293 cells treated with serum 20% 15', using p56 Dok-2 (Phospho-Tyr299) Antibody. The lane on the right is blocked with the phospho peptide.

Storage

-20°C for 1 year

501 Changsheng S Rd, Nanhu Dist, Jiaxing, Zhejiang, China

Tel: 86 21 31007137 | E-mail: save@bt-laboratory.com | www.bt-laboratory.com