

DOR-1(Phospho Ser363) Polyclonal Antibody

Description

| | |
|--------------------------------|---|
| Product type | Primary Antibody |
| Code | BT-AP15294 |
| Host | Rabbit |
| Isotype | IgG |
| Size | 20ul, 50ul, 100ul |
| Immunogen | The antiserum was produced against synthesized peptide derived from human Opioid Receptor-delta around the phosphorylation site of Ser363. AA range:323-372 |
| Mol wt | 40413 |
| Species reactivity | Human, Mouse, Rat |
| Clonality | Polyclonal |
| Recommended application | WB, IHC-p, IF, ELISA |
| Concentration | 1 mg/ml |
| Full name | Delta-type opioid receptor |
| Synonyms | Delta-type opioid receptor; OPRD1; OPRD; Delta-type opioid receptor; D-OR-1; DOR-1 |

This product is for research use only, not for use in human, therapeutic or diagnostic procedure.

Background

Inhibits neurotransmitter release by reducing calcium ion currents and increasing potassium ion conductance. Highly stereoselective. receptor for enkephalins.,online information:Delta opioid receptor entry,Belongs to the G-protein coupled receptor 1 family.,subunit:Interacts with GPRASP1.,

Recommended Dilution

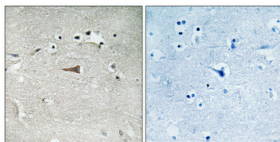
WB: 1: 500 - 1: 2000

IHC-p: 1: 100 - 1: 300

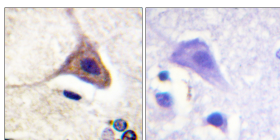
ELISA: 1: 5000

Not yet tested in other applications.

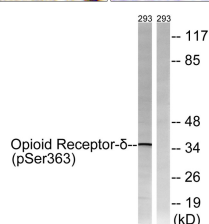
Images



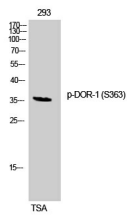
Immunohistochemical analysis of paraffin-embedded Human brain. Antibody was diluted at 1:100(4°C overnight). High-pressure and temperature Tris-EDTA,pH8.0 was used for antigen retrieval. Negative contrl (right) obtained from antibody was pre-absorbed by immunogen peptide.



Immunohistochemistry analysis of paraffin-embedded human brain, using Opioid Receptor-delta (Phospho-Ser363) Antibody. The picture on the right is blocked with the phospho peptide.



Western Blot analysis of 293 cells using Phospho-DOR-1 (S363) Polyclonal Antibody



Western blot analysis of lysates from 293 cells treated with TSA 400nM 24h, using Opioid Receptor-delta (Phospho-Ser363) Antibody. The lane on the right is blocked with the phospho peptide.

Storage

-20°C for 1 year

501 Changsheng S Rd, Nanhu Dist, Jiaxing, Zhejiang, China

Tel: 86 21 31007137 | E-mail: save@bt-laboratory.com | www.bt-laboratory.com