

## UBE2A/B Polyclonal Antibody

### Description

<b>Product type</b>	Primary Antibody
<b>Code</b>	BT-AP15296
<b>Host</b>	Rabbit
<b>Isotype</b>	IgG
<b>Size</b>	20ul, 50ul, 100ul
<b>Immunogen</b>	Synthesized peptide derived from the C-terminal region of human UBE2A/B.
<b>Mol wt</b>	N/A
<b>Species reactivity</b>	Human, Mouse, Rat
<b>Clonality</b>	Polyclonal
<b>Recommended application</b>	WB, IHC-p, IF, ELISA
<b>Concentration</b>	1 mg/ml
<b>Full name</b>	Ubiquitin-conjugating enzyme E2 A/Ubiquitin-conjugating enzyme E2 B
<b>Synonyms</b>	Ubiquitin-conjugating enzyme E2 A/Ubiquitin-conjugating enzyme E2 B; UBE2A; RAD6A; Ubiquitin-conjugating enzyme E2 A; RAD6 homolog A; HR6A; hHR6A; Ubiquitin carrier protein A; Ubiquitin-protein ligase A; UBE2B; RAD6B; Ubiquitin-conjugating enzyme E2 B; RAD6 homolog B; HR6B; hHR6B; Ubiquitin carrier protein B; Ubiquitin-conjugating enzyme E2-17 kDa; Ubiquitin-protein ligase B

**This product is for research use only, not for use in human, therapeutic or diagnostic procedure.**

### Background

The modification of proteins with ubiquitin is an important cellular mechanism for targeting abnormal or short-lived proteins for degradation. Ubiquitination involves at least three classes of enzymes: ubiquitin-activating enzymes, ubiquitin-conjugating enzymes, and ubiquitin-protein ligases. This gene encodes a member of the E2 ubiquitin-conjugating enzyme family. This enzyme is required for post-replicative DNA damage repair, and may play a role in transcriptional regulation. Mutations in this gene are associated with mental retardation. Alternative splicing results in multiple transcript variants.

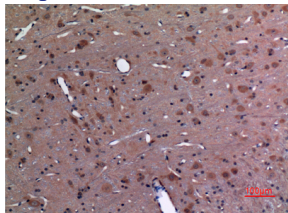
### Recommended Dilution

WB: 1: 500 - 1: 2000

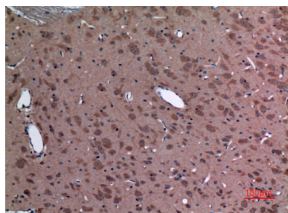
IHC-p: 1: 100 - 1: 300

Not yet tested in other applications.

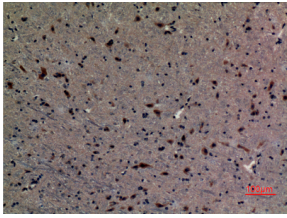
### Images



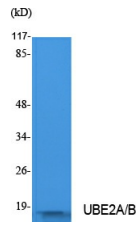
Immunohistochemical analysis of paraffin-embedded rat-brain, antibody was diluted at 1:100



Immunohistochemical analysis of paraffin-embedded rat-brain, antibody was diluted at 1:100



Immunohistochemical analysis of paraffin-embedded mouse-brain, antibody was diluted at 1:100



Western Blot analysis of extracts from Jurkat cells, using UBE2A/B Polyclonal Antibody. Secondary antibody was diluted at 1:20000

### Storage

-20°C for 1 year

501 Changsheng S Rd, Nanhu Dist, Jiaxing, Zhejiang, China

Tel: 86 21 31007137 | E-mail: [save@bt-laboratory.com](mailto:save@bt-laboratory.com) | [www.bt-laboratory.com](http://www.bt-laboratory.com)