

UBE2W Polyclonal Antibody

Description

Product type	Primary Antibody
Code	BT-AP15305
Host	Rabbit
Isotype	IgG
Size	20ul, 50ul, 100ul
Immunogen	Synthesized peptide derived from human protein . at AA range: 90-170
Mol wt	N/A
Species reactivity	Human, Rat, Mouse
Clonality	Polyclonal
Recommended application	WB, ELISA
Concentration	1 mg/ml
Full name	Ubiquitin-conjugating enzyme E2 W
Synonyms	Ubiquitin-conjugating enzyme E2 W ;EC 6.3.2.19;Ubiquitin carrier protein W;Ubiquitin-conjugating enzyme 16;UBC-16;Ubiquitin-protein ligase W

This product is for research use only, not for use in human, therapeutic or diagnostic procedure.

Background

This gene encodes a nuclear-localized ubiquitin-conjugating enzyme (E2) that, along with ubiquitin-activating (E1) and ligating (E3) enzymes, coordinates the addition of a ubiquitin moiety to existing proteins. The encoded protein promotes the ubiquitination of Fanconi anemia complementation group proteins and may be important in the repair of DNA damage. There is a pseudogene for this gene on chromosome 1. Alternative splicing results in multiple transcript variants.

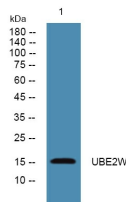
Recommended Dilution

WB: 1: 500 - 1: 2000

ELISA: 1: 5000 - 1: 20000

Not yet tested in other applications.

Images



Western blot analysis of lysates from KB cells, primary antibody was diluted at 1:1000, 4°C overnight

Storage

-20°C for 1 year