

## UBE2Z Polyclonal Antibody

### Description

|                                |                                                                                                                                                  |
|--------------------------------|--------------------------------------------------------------------------------------------------------------------------------------------------|
| <b>Product type</b>            | Primary Antibody                                                                                                                                 |
| <b>Code</b>                    | BT-AP15306                                                                                                                                       |
| <b>Host</b>                    | Rabbit                                                                                                                                           |
| <b>Isotype</b>                 | IgG                                                                                                                                              |
| <b>Size</b>                    | 20ul, 50ul, 100ul                                                                                                                                |
| <b>Immunogen</b>               | Synthesized peptide derived from part region of human protein                                                                                    |
| <b>Mol wt</b>                  | N/A                                                                                                                                              |
| <b>Species reactivity</b>      | Human, Rat, Mouse                                                                                                                                |
| <b>Clonality</b>               | Polyclonal                                                                                                                                       |
| <b>Recommended application</b> | WB, ELISA                                                                                                                                        |
| <b>Concentration</b>           | 1 mg/ml                                                                                                                                          |
| <b>Full name</b>               | Ubiquitin-conjugating enzyme E2 Z                                                                                                                |
| <b>Synonyms</b>                | Ubiquitin-conjugating enzyme E2 Z ;EC 6.3.2.19;Uba6-specific E2 conjugating enzyme 1;Use1;Ubiquitin carrier protein Z;Ubiquitin-protein ligase Z |

This product is for research use only, not for use in human, therapeutic or diagnostic procedure.

### Background

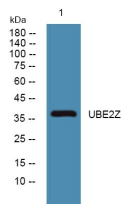
#### Recommended Dilution

WB: 1: 500 - 1: 2000

ELISA: 1: 5000 - 1: 20000

Not yet tested in other applications.

### Images



Western blot analysis of lysates from KB cells, primary antibody was diluted at 1:1000, 4°C overnight

### Storage

-20°C for 1 year

501 Changsheng S Rd, Nanhu Dist, Jiaxing, Zhejiang, China

Tel: 86 21 31007137 | E-mail: [save@bt-laboratory.com](mailto:save@bt-laboratory.com) | [www.bt-laboratory.com](http://www.bt-laboratory.com)