

## DPYL1 Polyclonal Antibody

### Description

Product type	Primary Antibody
Code	BT-AP15307
Host	Rabbit
Isotype	IgG
Size	20ul, 50ul, 100ul
Immunogen	Synthesized peptide derived from human protein . at AA range: 440-520
Mol wt	N/A
Species reactivity	Human, Mouse, Rat
Clonality	Polyclonal
Recommended application	WB, ELISA
Concentration	1 mg/ml
Full name	Dihydropyrimidinase-related protein 1
Synonyms	Dihydropyrimidinase-related protein 1 ;DRP-1;Collapsin response mediator protein 1;CRMP-1;Unc-33-like phosphoprotein 3;ULIP-3

This product is for research use only, not for use in human, therapeutic or diagnostic procedure.

### Background

This gene encodes a member of a family of cytosolic phosphoproteins expressed exclusively in the nervous system. The encoded protein is thought to be a part of the semaphorin signal transduction pathway implicated in semaphorin-induced growth cone collapse during neural development. Alternative splicing results in multiple transcript variants.

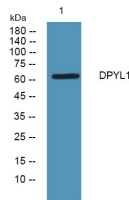
### Recommended Dilution

WB: 1: 500 - 1: 2000

ELISA: 1: 5000 - 1: 20000

Not yet tested in other applications.

### Images



Western blot analysis of lysates from K562 cells, primary antibody was diluted at 1:1000, 4°C overnight

### Storage

-20°C for 1 year