

DUS26 Polyclonal Antibody

Description

Product type	Primary Antibody
Code	BT-AP15335
Host	Rabbit
Isotype	IgG
Size	20ul, 50ul, 100ul
Immunogen	Synthesized peptide derived from human protein . at AA range: 130-210
Mol wt	N/A
Species reactivity	Human, Mouse, Rat
Clonality	Polyclonal
Recommended application	WB, ELISA
Concentration	1 mg/ml
Full name	Dual specificity protein phosphatase 26
Synonyms	Dual specificity protein phosphatase 26 ;EC 3.1.3.16;EC 3.1.3.48;Dual specificity phosphatase SKRP3;Low-molecular-mass dual-specificity phosphatase 4;DSP-4;LDP-4;Mitogen-activated protein

This product is for research use only, not for use in human, therapeutic or diagnostic procedure.

Background

This gene encodes a member of the tyrosine phosphatase family of proteins and exhibits dual specificity by dephosphorylating tyrosine as well as serine and threonine residues. This gene has been described as both a tumor suppressor and an oncogene depending on the cellular context. This protein may regulate neuronal proliferation and has been implicated in the progression of glioblastoma through its ability to dephosphorylate the p53 tumor suppressor. Alternative splicing results in multiple transcript variants.

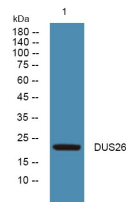
Recommended Dilution

WB: 1: 500 - 1: 2000

ELISA: 1: 5000 - 1: 20000

Not yet tested in other applications.

Images



Western blot analysis of lysates from SH-SY5Y cells, primary antibody was diluted at 1:1000, 4°C overnight

Storage

-20°C for 1 year