

DUSP6 Polyclonal Antibody

Description

Product type	Primary Antibody
Code	BT-AP15337
Host	Rabbit
Isotype	IgG
Size	20ul, 50ul, 100ul
Immunogen	Synthetic Peptide of DUSP6
Mol wt	N/A
Species reactivity	Human, Rat, Mouse
Clonality	Polyclonal
Recommended application	WB
Concentration	1 mg/ml
Full name	Dual specificity protein phosphatase 6
Synonyms	Dual specificity protein phosphatase 6 ;EC 3.1.3.16;EC 3.1.3.48;Dual specificity protein phosphatase PYST1;Mitogen-activated protein kinase phosphatase 3;MAP kinase phosphatase 3;MKP-3; DUSP6; MKP3; PYST1; Dual specificity protein phosphatase 6; Dual specificity protein phosphatase PYST1; Mitogen-activated protein kinase phosphatase 3; MAP kinase phosphatase 3; MKP-3

This product is for research use only, not for use in human, therapeutic or diagnostic procedure.

Background

The protein encoded by this gene is a member of the dual specificity protein phosphatase subfamily. These phosphatases inactivate their target kinases by dephosphorylating both the phosphoserine/threonine and phosphotyrosine residues. They negatively regulate members of the mitogen-activated protein (MAP) kinase superfamily (MAPK/ERK, SAPK/JNK, p38), which are associated with cellular proliferation and differentiation. Different members of the family of dual specificity phosphatases show distinct substrate specificities for various MAP kinases, different tissue distribution and subcellular localization, and different modes of inducibility of their expression by extracellular stimuli. This gene product inactivates ERK2, is expressed in a variety of tissues with the highest levels in heart and pancreas, and unlike most other members of this family, is localized in the cytoplasm. Mutations in t

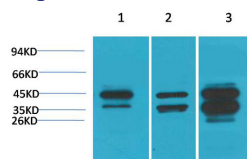
Recommended Dilution

WB: 1: 1000 - 1: 3000

ELISA: 1: 20000

Not yet tested in other applications.

Images



Western blot analysis of 1) HepG2, 2)3T3, 3) Rat Heart Tissue with DUSP6 Rabbit pAb diluted at 1:3,000.

Storage

-20°C for 1 year

