

## E-cadherin Polyclonal Antibody

### Description

<b>Product type</b>	Primary Antibody
<b>Code</b>	BT-AP15350
<b>Host</b>	Rabbit
<b>Isotype</b>	IgG
<b>Size</b>	20ul, 50ul, 100ul
<b>Immunogen</b>	Recombinant Protein of E-cadherin
<b>Mol wt</b>	N/A
<b>Species reactivity</b>	Human
<b>Clonality</b>	Polyclonal
<b>Recommended application</b>	WB, IHC-p, IF
<b>Concentration</b>	N/A
<b>Full name</b>	Cadherin-1
<b>Synonyms</b>	Cadherin-1; CDH1; CDHE; UVO; Cadherin-1; CAM 120/80; Epithelial cadherin; E-cadherin; Uvomorulin; CD324

**This product is for research use only, not for use in human, therapeutic or diagnostic procedure.**

### Background

This gene encodes a classical cadherin of the cadherin superfamily. Alternative splicing results in multiple transcript variants, at least one of which encodes a preproprotein that is proteolytically processed to generate the mature glycoprotein. This calcium-dependent cell-cell adhesion protein is comprised of five extracellular cadherin repeats, a transmembrane region and a highly conserved cytoplasmic tail. Mutations in this gene are correlated with gastric, breast, colorectal, thyroid and ovarian cancer. Loss of function of this gene is thought to contribute to cancer progression by increasing proliferation, invasion, and/or metastasis. The ectodomain of this protein mediates bacterial adhesion to mammalian cells and the cytoplasmic domain is required for internalization. This gene is present in a gene cluster with other members of the cadherin family on chromosome 16.

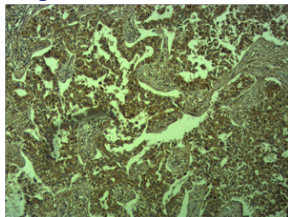
### Recommended Dilution

WB: 1: 1000

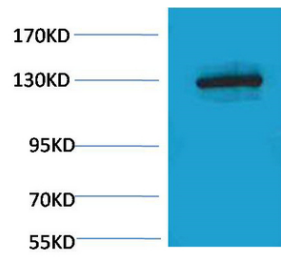
IHC: 1: 500 - 1000

Not yet tested in other applications.

### Images



Immunohistochemical analysis of paraffin-embedded human Lung carcinoma using E-cadherin Polyclonal Antibody.



Western blot analysis of HeLa using E-cadherin Polyclonal Antibody. Secondary antibody was diluted at 1:20000

### Storage

-20°C for 1 year

501 Changsheng S Rd, Nanhu Dist, Jiaxing, Zhejiang, China

Tel: 86 21 31007137 | E-mail: [save@bt-laboratory.com](mailto:save@bt-laboratory.com) | [www.bt-laboratory.com](http://www.bt-laboratory.com)