

## EI2BB Polyclonal Antibody

### Description

Product type	Primary Antibody
Code	BT-AP15384
Host	Rabbit
Isotype	IgG
Size	20ul, 50ul, 100ul
Immunogen	Synthesized peptide derived from human protein . at AA range: 50-130
Mol wt	N/A
Species reactivity	Human, Mouse, Rat
Clonality	Polyclonal
Recommended application	WB, ELISA
Concentration	1 mg/ml
Full name	Translation initiation factor eIF-2B subunit beta
Synonyms	Translation initiation factor eIF-2B subunit beta ;S20I15;S20III15;eIF-2B GDP-GTP exchange factor subunit beta

This product is for research use only, not for use in human, therapeutic or diagnostic procedure.

### Background

This gene encodes the beta subunit of eukaryotic initiation factor-2B (EIF2B). EIF2B is involved in protein synthesis and exchanges GDP and GTP for its activation and deactivation.

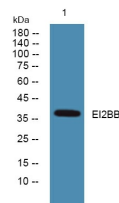
### Recommended Dilution

WB: 1: 500 - 1: 2000

ELISA: 1: 5000 - 1: 20000

Not yet tested in other applications.

### Images



Western blot analysis of lysates from SH-SY5Y cells, primary antibody was diluted at 1:1000, 4°C overnight

### Storage

-20°C for 1 year