

## eIF4B(Phospho Ser422) Polyclonal Antibody

### Description

<b>Product type</b>	Primary Antibody
<b>Code</b>	BT-AP15387
<b>Host</b>	Rabbit
<b>Isotype</b>	IgG
<b>Size</b>	20ul, 50ul, 100ul
<b>Immunogen</b>	The antiserum was produced against synthesized peptide derived from human eIF4B around the phosphorylation site of Ser422. AA range:388-437
<b>Mol wt</b>	69224
<b>Species reactivity</b>	Human, Mouse
<b>Clonality</b>	Polyclonal
<b>Recommended application</b>	WB, IHC-p, IF, ICC, ELISA
<b>Concentration</b>	1 mg/ml
<b>Full name</b>	Eukaryotic translation initiation factor 4B
<b>Synonyms</b>	Eukaryotic translation initiation factor 4B; EIF4B; Eukaryotic translation initiation factor 4B; eIF-4B

**This product is for research use only, not for use in human, therapeutic or diagnostic procedure.**

### Background

Required for the binding of mRNA to ribosomes. Functions in close association with EIF4-F and EIF4-A. Binds near the 5'-terminal cap of mRNA in presence of EIF-4F and ATP. Promotes the ATPase activity and the ATP-dependent RNA unwinding activity of both EIF4-A and EIF4-F.,Contains 1 RRM (RNA recognition motif) domain.,subunit:Self-associates and interacts with EIF3 p170 subunit.,

### Recommended Dilution

WB: 1: 500 - 1: 2000

IHC-p: 1: 100 - 1: 300

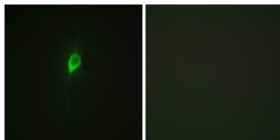
IF: 1: 200 - 1: 1000

ICC: 1: 200 - 1: 1000

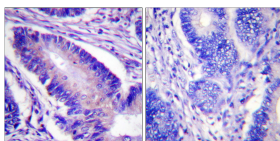
ELISA: 1: 40000

Not yet tested in other applications.

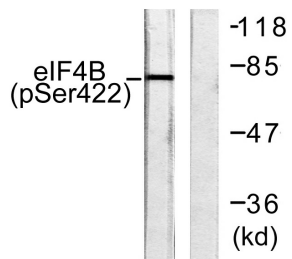
### Images



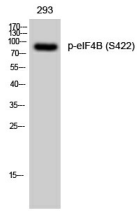
Immunofluorescence analysis of NIH/3T3 cells, using eIF4B (Phospho-Ser422) Antibody. The picture on the right is blocked with the phospho peptide.



Immunohistochemistry analysis of paraffin-embedded human colon carcinoma, using eIF4B (Phospho-Ser422) Antibody. The picture on the right is blocked with the phospho peptide.



Western Blot analysis of 293 cells using Phospho-eIF4B (S422) Polyclonal Antibody diluted at 1:2000



Western blot analysis of lysates from NIH/3T3 cells, using eIF4B (Phospho-Ser422) Antibody. The lane on the right is blocked with the phospho peptide.

### Storage

-20°C for 1 year

501 Changsheng S Rd, Nanhu Dist, Jiaxing, Zhejiang, China

Tel: 86 21 31007137 | E-mail: [save@bt-laboratory.com](mailto:save@bt-laboratory.com) | [www.bt-laboratory.com](http://www.bt-laboratory.com)