

eIF4G(Phospho Ser1148) Polyclonal Antibody

Description

Product type	Primary Antibody
Code	BT-AP15388
Host	Rabbit
Isotype	IgG
Size	20ul, 50ul, 100ul
Immunogen	The antiserum was produced against synthesized peptide derived from human eIF4G around the phosphorylation site of Ser1108. AA range:1074-1123
Mol wt	175535
Species reactivity	Human, Mouse, Rat
Clonality	Polyclonal
Recommended application	IHC-p, IF, ELISA
Concentration	1 mg/ml
Full name	Eukaryotic translation initiation factor 4 gamma 1
Synonyms	Eukaryotic translation initiation factor 4 gamma 1; EIF4G1; EIF4F; EIF4G; EIF4G1; Eukaryotic translation initiation factor 4 gamma 1; eIF-4-gamma 1; eIF-4G 1; eIF-4G1; p220

This product is for research use only, not for use in human, therapeutic or diagnostic procedure.

Background

The protein encoded by this gene is a component of the multi-subunit protein complex EIF4F. This complex facilitates the recruitment of mRNA to the ribosome, which is a rate-limiting step during the initiation phase of protein synthesis. The recognition of the mRNA cap and the ATP-dependent unwinding of 5'-terminal secondary structure is catalyzed by factors in this complex. The subunit encoded by this gene is a large scaffolding protein that contains binding sites for other members of the EIF4F complex. A domain at its N-terminus can also interact with the poly(A)-binding protein, which may mediate the circularization of mRNA during translation. Alternative splicing results in multiple transcript variants, some of which are derived from alternative promoter usage.

Recommended Dilution

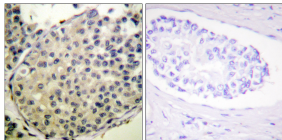
WB: 1: 500 - 1: 2000

IHC-p: 1: 100 - 1: 300

ELISA: 1: 40000

Not yet tested in other applications.

Images



Immunohistochemistry analysis of paraffin-embedded human breast carcinoma, using eIF4G (Phospho-Ser1108) Antibody. The picture on the right is blocked with the phospho peptide.

Storage

-20°C for 1 year