

eIF5A/eIF5A2 Polyclonal Antibody

Description

Product type	Primary Antibody
Code	BT-AP15389
Host	Rabbit
Isotype	IgG
Size	20ul, 50ul, 100ul
Immunogen	Synthesized peptide derived from human eIF5A/eIF5A2
Mol wt	N/A
Species reactivity	Human, Mouse, Rat
Clonality	Polyclonal
Recommended application	WB, ELISA
Concentration	1 mg/ml
Full name	eIF5A/eIF5A2
Synonyms	eIF5A/eIF5A2 ; Eukaryotic translation initiation factor 5A-1; eIF-5A-1; eIF-5A1; Eukaryotic initiation factor 5A isoform 1; eIF-5A; Rev-binding factor; eIF-4D

This product is for research use only, not for use in human, therapeutic or diagnostic procedure.

Background

N/A

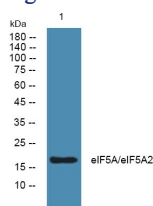
Recommended Dilution

WB: 1: 500 - 1: 2000

ELISA: 1: 5000 - 1: 20000

Not yet tested in other applications.

Images



Western blot analysis of lysates from PC12 cells, primary antibody was diluted at 1:1000, 4°C overnight

Storage

-20°C for 1 year