

ELL3 Polyclonal Antibody

Description

Product type	Primary Antibody
Code	BT-AP15390
Host	Rabbit
Isotype	IgG
Size	20ul, 50ul, 100ul
Immunogen	Synthesized peptide derived from human protein . at AA range: 210-290
Mol wt	N/A
Species reactivity	Human, Mouse
Clonality	Polyclonal
Recommended application	WB, ELISA
Concentration	1 mg/ml
Full name	RNA polymerase II elongation factor ELL3
Synonyms	RNA polymerase II elongation factor ELL3

This product is for research use only, not for use in human, therapeutic or diagnostic procedure.

Background

Elongation factor that can increase the catalytic rate of RNA polymerase II transcription by suppressing transient pausing by the polymerase at multiple sites along the DNA.,Belongs to the ELL/occludin family.,tissue specificity:Testis specific.,

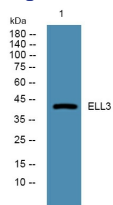
Recommended Dilution

WB: 1: 500 - 1: 2000

ELISA: 1: 5000 - 1: 20000

Not yet tested in other applications.

Images



Western blot analysis of lysates from K562 cells, primary antibody was diluted at 1:1000, 4°C overnight

Storage

-20°C for 1 year