

ENA-78 Polyclonal Antibody

Description

Product type	Primary Antibody
Code	BT-AP15398
Host	Rabbit
Isotype	IgG
Size	20ul, 50ul, 100ul
Immunogen	Synthetic peptide from human protein at AA range: 65-114
Mol wt	N/A
Species reactivity	Human, Rat, Mouse
Clonality	Polyclonal
Recommended application	IHC-p, IF, ELISA
Concentration	1 mg/ml
Full name	C-X-C motif chemokine 5
Synonyms	C-X-C motif chemokine 5 ;ENA-78;1-78;Epithelial-derived neutrophil-activating protein 78;Neutrophil-activating peptide ENA-78;Small-inducible cytokine B5 [Cleaved into: ENA-78;8-78; ENA-78;9-; C-X-C motif chemokine 5; ENA-78;1-78; Epithelial-derived neutrophil-activating protein 78; Neutrophil-activating peptide ENA-78; Small-inducible cytokine B5; ENA-78;8-78; ENA-78;9-78;

This product is for research use only, not for use in human, therapeutic or diagnostic procedure.

Background

This gene encodes a protein that is a member of the CXC subfamily of chemokines. Chemokines, which recruit and activate leukocytes, are classified by function (inflammatory or homeostatic) or by structure. This protein is proposed to bind the G-protein coupled receptor chemokine (C-X-C motif) receptor 2 to recruit neutrophils, to promote angiogenesis and to remodel connective tissues. This protein is thought to play a role in cancer cell proliferation, migration, and invasion.

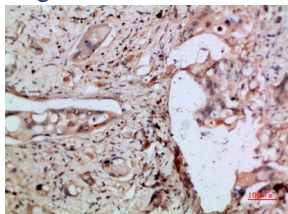
Recommended Dilution

IHC-p: 1: 50 - 1: 200

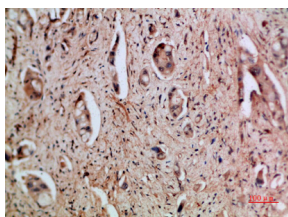
ELISA: 1: 10000 - 1: 20000

Not yet tested in other applications.

Images



Immunohistochemical analysis of paraffin-embedded human-pancreas-cancer, antibody was diluted at 1:200



Immunohistochemical analysis of paraffin-embedded human-pancreas-cancer, antibody was diluted at 1:200

Storage

-20°C for 1 year

501 Changsheng S Rd, Nanhu Dist, Jiaxing, Zhejiang, China

Tel: 86 21 31007137 | E-mail: save@bt-laboratory.com | www.bt-laboratory.com