

Endothelin B Receptor Polyclonal Antibody

Description

Product type	Primary Antibody
Code	BT-AP15402
Host	Rabbit
Isotype	IgG
Size	20ul, 50ul, 100ul
Immunogen	Synthetic Peptide of Endothelin B Receptor
Mol wt	N/A
Species reactivity	Human, Rat, Mouse
Clonality	Polyclonal
Recommended application	IHC-p, IF
Concentration	1 mg/ml
Full name	Endothelin B receptor
Synonyms	Endothelin B receptor ;ET-B;ET-BR;Endothelin receptor non-selective type; Endothelin B receptor; ET-B; ET-BR; Endothelin receptor non-selective type

This product is for research use only, not for use in human, therapeutic or diagnostic procedure.

Background

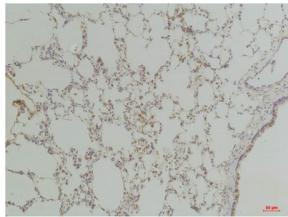
The protein encoded by this gene is a G protein-coupled receptor which activates a phosphatidylinositol-calcium second messenger system. Its ligand, endothelin, consists of a family of three potent vasoactive peptides: ET1, ET2, and ET3. Studies suggest that the multigenic disorder, Hirschsprung disease type 2, is due to mutations in the endothelin receptor type B gene. Alternative splicing and the use of alternative promoters results in multiple transcript variants.

Recommended Dilution

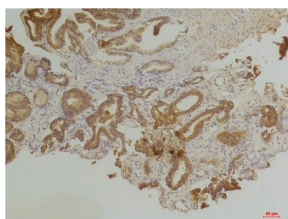
IHC: 1: 100 - 1: 200

Not yet tested in other applications.

Images



Immunohistochemical analysis of paraffin-embedded Human Prostate Tissue using Endothelin B Receptor Rabbit pAb diluted at 1:200.



Immunohistochemical analysis of paraffin-embedded Rat Lung Tissue using Endothelin B Receptor Rabbit pAb diluted at 1:200.

Storage

-20°C for 1 year

501 Changsheng S Rd, Nanhu Dist, Jiaxing, Zhejiang, China

Tel: 86 21 31007137 | E-mail: save@bt-laboratory.com | www.bt-laboratory.com