

Eotaxin-2 Polyclonal Antibody

Description

Product type	Primary Antibody
Code	BT-AP15405
Host	Rabbit
Isotype	IgG
Size	20ul, 50ul, 100ul
Immunogen	Synthetic peptide from human protein at AA range: 61-110
Mol wt	N/A
Species reactivity	Human, Rat, Mouse
Clonality	Polyclonal
Recommended application	IHC-p, IF, ELISA
Concentration	1 mg/ml
Full name	C-C motif chemokine 24
Synonyms	C-C motif chemokine 24 ;CK-beta-6;Eosinophil chemotactic protein 2;Eotaxin-2;Myeloid progenitor inhibitory factor 2;MPIF-2;Small-inducible cytokine A24; C-C motif chemokine 24; CK-beta-6; Eosinophil chemotactic protein 2; Eotaxin-2; Myeloid progenitor inhibitory factor 2; MPIF-2; Small-inducible cytokine A24

This product is for research use only, not for use in human, therapeutic or diagnostic procedure.

Background

This gene belongs to the subfamily of small cytokine CC genes. Cytokines are a family of secreted proteins involved in immunoregulatory and inflammatory processes. The CC cytokines are proteins characterized by two adjacent cysteines. The cytokine encoded by this gene displays chemotactic activity on resting T lymphocytes, a minimal activity on neutrophils, and is negative on monocytes and activated T lymphocytes. The protein is also a strong suppressor of colony formation by a multipotential hematopoietic progenitor cell line.

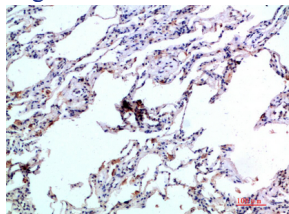
Recommended Dilution

IHC-p: 1: 50 - 1: 200

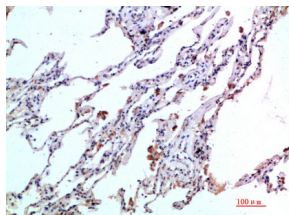
ELISA: 1: 10000 - 1: 20000

Not yet tested in other applications.

Images



Immunohistochemical analysis of paraffin-embedded human-lung, antibody was diluted at 1:200



Immunohistochemical analysis of paraffin-embedded human-lung, antibody was diluted at 1:200

Storage

-20°C for 1 year

501 Changsheng S Rd, Nanhu Dist, Jiaxing, Zhejiang, China

Tel: 86 21 31007137 | E-mail: save@bt-laboratory.com | www.bt-laboratory.com