

VAMP7 Polyclonal Antibody

Description

Product type	Primary Antibody
Code	BT-AP15411
Host	Rabbit
Isotype	IgG
Size	20ul, 50ul, 100ul
Immunogen	Synthesized peptide derived from part region of human protein
Mol wt	N/A
Species reactivity	Human, Mouse, Rat
Clonality	Polyclonal
Recommended application	WB, ELISA
Concentration	1 mg/ml
Full name	Vesicle-associated membrane protein 7
Synonyms	Vesicle-associated membrane protein 7 ;VAMP-7;Synaptobrevin-like protein 1;Tetanus-insensitive VAMP;Ti-VAMP

This product is for research use only, not for use in human, therapeutic or diagnostic procedure.

Background

This gene encodes a transmembrane protein that is a member of the soluble N-ethylmaleimide-sensitive factor attachment protein receptor (SNARE) family. The encoded protein localizes to late endosomes and lysosomes and is involved in the fusion of transport vesicles to their target membranes. Alternate splicing results in multiple transcript variants.

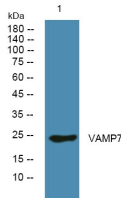
Recommended Dilution

WB: 1: 500 - 1: 2000

ELISA: 1: 5000 - 1: 20000

Not yet tested in other applications.

Images



Western blot analysis of lysates from U2OS cells, primary antibody was diluted at 1:1000, 4°C overnight

Storage

-20°C for 1 year