

EPG5 Polyclonal Antibody

Description

Product type	Primary Antibody
Code	BT-AP15415
Host	Rabbit
Isotype	IgG
Size	20ul, 50ul, 100ul
Immunogen	Recombinant Protein of EPG5
Mol wt	N/A
Species reactivity	Human, Mouse, Rat
Clonality	Polyclonal
Recommended application	WB, IHC-p, IF
Concentration	
Full name	Ectopic P granules protein 5 homolog
Synonyms	Ectopic P granules protein 5 homolog; EPG5; KIAA1632; Ectopic P granules protein 5 homolog

This product is for research use only, not for use in human, therapeutic or diagnostic procedure.

Background

This gene encodes a large coiled coil domain-containing protein that functions in autophagy during starvation conditions. Mutations in this gene cause Vici syndrome.

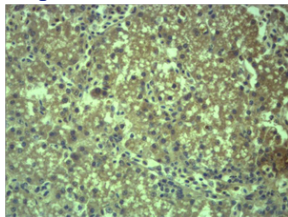
Recommended Dilution

WB: 1: 1000 - 1: 2000

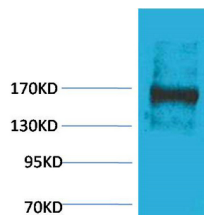
IHC: 1: 200 - 500

Not yet tested in other applications.

Images



Immunohistochemical analysis of paraffin-embedded Mouse Liver Tissue using EPG5 Polyclonal Antibody.



Western blot analysis of Rat Liver Tissue using EPG5 Polyclonal Antibody. Secondary antibody was diluted at 1:20000

Storage

-20°C for 1 year