

## EPG5 Polyclonal Antibody

### Description

<b>Product type</b>	Primary Antibody
<b>Code</b>	BT-AP15419
<b>Host</b>	Rabbit
<b>Isotype</b>	IgG
<b>Size</b>	20ul, 50ul, 100ul
<b>Immunogen</b>	Recombinant Protein of EPG5
<b>Mol wt</b>	N/A
<b>Species reactivity</b>	Human, Mouse, Rat
<b>Clonality</b>	Polyclonal
<b>Recommended application</b>	WB, IHC-p, IF
<b>Concentration</b>	
<b>Full name</b>	Ectopic P granules protein 5 homolog
<b>Synonyms</b>	Ectopic P granules protein 5 homolog; EPG5; KIAA1632; Ectopic P granules protein 5 homolog

**This product is for research use only, not for use in human, therapeutic or diagnostic procedure.**

### Background

This gene encodes a large coiled coil domain-containing protein that functions in autophagy during starvation conditions. Mutations in this gene cause Vici syndrome.

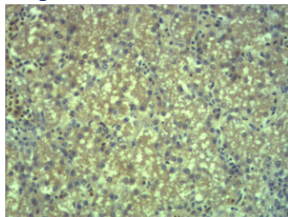
### Recommended Dilution

WB: 1: 1000 - 1: 2000

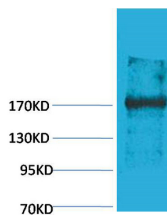
IHC: 1: 200 - 500

Not yet tested in other applications.

### Images



Immunohistochemical analysis of paraffin-embedded Mouse Liver Tissue using EPG5 Polyclonal Antibody.



Western blot analysis of Rat Liver Tissue using EPG5 Polyclonal Antibody. Secondary antibody was diluted at 1:20000

### Storage

-20°C for 1 year