

## EphA1 Polyclonal Antibody

### Description

<b>Product type</b>	Primary Antibody
<b>Code</b>	BT-AP15420
<b>Host</b>	Rabbit
<b>Isotype</b>	IgG
<b>Size</b>	20ul, 50ul, 100ul
<b>Immunogen</b>	Synthetic Peptide of EphA1
<b>Mol wt</b>	N/A
<b>Species reactivity</b>	Human, Rat, Mouse
<b>Clonality</b>	Polyclonal
<b>Recommended application</b>	WB, IHC-p, IF
<b>Concentration</b>	1 mg/ml
<b>Full name</b>	Ephrin type-A receptor 1
<b>Synonyms</b>	Ephrin type-A receptor 1 ;hEpha1;EC 2.7.10.1;EPH tyrosine kinase;EPH tyrosine kinase 1;Erythropoietin-producing hepatoma receptor;Tyrosine-protein kinase receptor EPH; EPHA1; EPH; EPHT; EPHT1; Ephrin type-A receptor 1; hEpha1; EPH tyrosine kinase; EPH tyrosine kinase 1; Erythropoietin-producing hepatoma receptor; Tyrosine-protein kinase receptor EPH

**This product is for research use only, not for use in human, therapeutic or diagnostic procedure.**

### Background

This gene belongs to the ephrin receptor subfamily of the protein-tyrosine kinase family. EPH and EPH-related receptors have been implicated in mediating developmental events, particularly in the nervous system. Receptors in the EPH subfamily typically have a single kinase domain and an extracellular region containing a Cys-rich domain and 2 fibronectin type III repeats. The ephrin receptors are divided into 2 groups based on the similarity of their extracellular domain sequences and their affinities for binding ephrin-A and ephrin-B ligands. This gene is expressed in some human cancer cell lines and has been implicated in carcinogenesis.

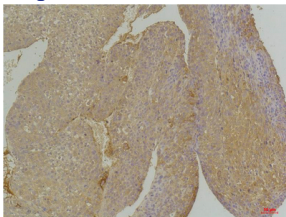
### Recommended Dilution

WB: 1: 1000 - 1: 2000

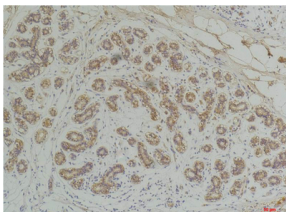
IHC: 1: 100 - 1: 200

Not yet tested in other applications.

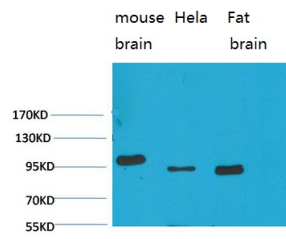
### Images



Immunohistochemical analysis of paraffin-embedded Human Hepatocarcinoma using EphA1 Rabbit pAb diluted at 1:200.



Immunohistochemical analysis of paraffin-embedded Human Breast Carcinoma using EphA1 Rabbit pAb diluted at 1:200.



Western blot analysis of 1)Mouse Brain Tissue, 2)Hela, 3)Rat Brain Tissue with EphA1 Rabbit pAb diluted at 1:2,000.

### Storage

-20°C for 1 year

501 Changsheng S Rd, Nanhu Dist, Jiaxing, Zhejiang, China

Tel: 86 21 31007137 | E-mail: [save@bt-laboratory.com](mailto:save@bt-laboratory.com) | [www.bt-laboratory.com](http://www.bt-laboratory.com)