

EphA7(Phospho Tyr791) Polyclonal Antibody

Description

Product type	Primary Antibody
Code	BT-AP15434
Host	Rabbit
Isotype	IgG
Size	20ul, 50ul, 100ul
Immunogen	Synthesized phospho-peptide around the phosphorylation site of human EphA7 (phospho Tyr791)
Mol wt	112097
Species reactivity	Human, Mouse, Rat
Clonality	Polyclonal
Recommended application	WB, ELISA
Concentration	1 mg/ml
Full name	Ephrin type-A receptor 7
Synonyms	Ephrin type-A receptor 7; EPHA7; EHK3; HEK11; Ephrin type-A receptor 7; EPH homology kinase 3; EHK-3; EPH-like kinase 11; EK11; hEK11

This product is for research use only, not for use in human, therapeutic or diagnostic procedure.

Background

This gene belongs to the ephrin receptor subfamily of the protein-tyrosine kinase family. EPH and EPH-related receptors have been implicated in mediating developmental events, particularly in the nervous system. Receptors in the EPH subfamily typically have a single kinase domain and an extracellular region containing a Cys-rich domain and 2 fibronectin type III repeats. The ephrin receptors are divided into 2 groups based on the similarity of their extracellular domain sequences and their affinities for binding ephrin-A and ephrin-B ligands. Increased expression of this gene is associated with multiple forms of carcinoma. Alternative splicing results in multiple transcript variants.

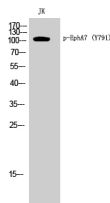
Recommended Dilution

WB: 1: 500 - 1: 2000

ELISA: 1: 10000

Not yet tested in other applications.

Images



Western Blot analysis of JK cells using Phospho-EphA7 (Y791) Polyclonal Antibody

Storage

-20°C for 1 year