

## VAX2 Polyclonal Antibody

### Description

Product type	Primary Antibody
Code	BT-AP15441
Host	Rabbit
Isotype	IgG
Size	20ul, 50ul, 100ul
Immunogen	Synthesized peptide derived from part region of human protein
Mol wt	N/A
Species reactivity	Human, Rat, Mouse
Clonality	Polyclonal
Recommended application	WB, ELISA
Concentration	1 mg/ml
Full name	Ventral anterior homeobox 2
Synonyms	Ventral anterior homeobox 2

This product is for research use only, not for use in human, therapeutic or diagnostic procedure.

### Background

This gene encodes a homeobox protein and is almost exclusively expressed in the ventral portion of the retina during development. In mouse studies, this gene was found to be required for the correct formation of the optic fissure and other aspects of retinal development.

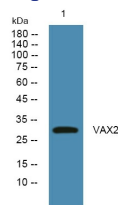
### Recommended Dilution

WB: 1: 500 - 1: 2000

ELISA: 1: 5000 - 1: 20000

Not yet tested in other applications.

### Images



Western blot analysis of lysates from HCT116 cells, primary antibody was diluted at 1:1000, 4°C overnight

### Storage

-20°C for 1 year