

## VCC1 Polyclonal Antibody

### Description

<b>Product type</b>	Primary Antibody
<b>Code</b>	BT-AP15442
<b>Host</b>	Rabbit
<b>Isotype</b>	IgG
<b>Size</b>	20ul, 50ul, 100ul
<b>Immunogen</b>	Synthesized peptide derived from part region of human protein
<b>Mol wt</b>	N/A
<b>Species reactivity</b>	Human, Rat, Mouse
<b>Clonality</b>	Polyclonal
<b>Recommended application</b>	WB, ELISA
<b>Concentration</b>	1 mg/ml
<b>Full name</b>	VEGF co-regulated chemokine 1
<b>Synonyms</b>	VEGF co-regulated chemokine 1 ;C-X-C motif chemokine 17;Dendritic cell and monocyte chemokine-like protein;DMC

This product is for research use only, not for use in human, therapeutic or diagnostic procedure.

### Background

The protein encoded by this gene is a mucosal chemokine that attracts immature dendritic cells and blood monocytes to the lungs. The encoded protein also promotes tumorigenesis through an angiogenic activity. Finally, this protein exhibits strong antimicrobial activity against *E. coli*, *S. aureus*, *Salmonella*, *P. aeruginosa*, and *C. albicans*. Two transcript variants, one protein-coding and the other non-protein coding, have been found for this gene.

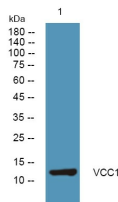
### Recommended Dilution

WB: 1: 500 - 1: 2000

ELISA: 1: 5000 - 1: 20000

Not yet tested in other applications.

### Images



Western blot analysis of lysates from KB cells, primary antibody was diluted at 1:1000, 4°C overnight

### Storage

-20°C for 1 year