

Eps15(Phospho Tyr849) Polyclonal Antibody

Description

Product type	Primary Antibody
Code	BT-AP15449
Host	Rabbit
Isotype	IgG
Size	20ul, 50ul, 100ul
Immunogen	Synthesized phospho-peptide around the phosphorylation site of human Eps15 (phospho Tyr849)
Mol wt	98656
Species reactivity	Human, Mouse, Rat
Clonality	Polyclonal
Recommended application	WB, ELISA
Concentration	1 mg/ml
Full name	Epidermal growth factor receptor substrate 15
Synonyms	Epidermal growth factor receptor substrate 15; EPS15; AF1P; Epidermal growth factor receptor substrate 15; Protein Eps15; Protein AF-1p

This product is for research use only, not for use in human, therapeutic or diagnostic procedure.

Background

This gene encodes a protein that is part of the EGFR pathway. The protein is present at clatherin-coated pits and is involved in receptor-mediated endocytosis of EGF. Notably, this gene is rearranged with the HRX/ALL/MLL gene in acute myelogeneous leukemias. Alternative splicing results in multiple transcript variants encoding distinct isoforms.

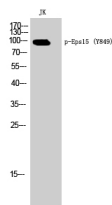
Recommended Dilution

WB: 1: 500 - 1: 2000

ELISA: 1: 10000

Not yet tested in other applications.

Images



Western Blot analysis of JK cells using Phospho-Eps15 (Y849) Polyclonal Antibody

Storage

-20°C for 1 year