

Erbin(Phospho Tyr1104) Polyclonal Antibody

Description

Product type	Primary Antibody
Code	BT-AP15450
Host	Rabbit
Isotype	IgG
Size	20ul, 50ul, 100ul
Immunogen	Synthesized phospho-peptide around the phosphorylation site of human Erbin (phospho Tyr1104)
Mol wt	158298
Species reactivity	Human, Rat, Mouse
Clonality	Polyclonal
Recommended application	WB, ELISA
Concentration	1 mg/ml
Full name	Protein LAP2
Synonyms	Protein LAP2; ERBB2IP; ERBIN; KIAA1225; LAP2; Protein LAP2; Densin-180-like protein; Erbb2-interacting protein; Erbin

This product is for research use only, not for use in human, therapeutic or diagnostic procedure.

Background

This gene is a member of the leucine-rich repeat and PDZ domain (LAP) family. The encoded protein contains 17 leucine-rich repeats and one PDZ domain. It binds to the unphosphorylated form of the ERBB2 protein and regulates ERBB2 function and localization. It has also been shown to affect the Ras signaling pathway by disrupting Ras-Raf interaction. Alternatively spliced transcript variants encoding multiple isoforms have been observed for this gene.

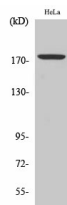
Recommended Dilution

WB: 1: 500 - 1: 2000

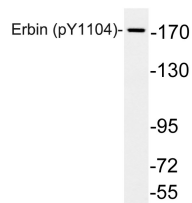
ELISA: 1: 10000

Not yet tested in other applications.

Images



Western Blot analysis of various cells using Phospho-Erbin (Y1104) Polyclonal Antibody



Western blot analysis of lysates from HeLa cells, using phospho-Erbin (Phospho-Tyr1104) antibody.

Storage

-20°C for 1 year

501 Changsheng S Rd, Nanhu Dist, Jiaxing, Zhejiang, China

Tel: 86 21 31007137 | E-mail: save@bt-laboratory.com | www.bt-laboratory.com