

## ERK 1/2(Phospho Thr202/Y204) Polyclonal Antibody

### Description

<b>Product type</b>	Primary Antibody
<b>Code</b>	BT-AP15457
<b>Host</b>	Rabbit
<b>Isotype</b>	IgG
<b>Size</b>	20ul, 50ul, 100ul
<b>Immunogen</b>	Synthesized phospho-peptide around the phosphorylation site of human ERK 1/2 (phospho Thr202/Y204)
<b>Mol wt</b>	43136
<b>Species reactivity</b>	Human, Mouse, Rat
<b>Clonality</b>	Polyclonal
<b>Recommended application</b>	IF, ICC, WB, IHC-p, ELISA
<b>Concentration</b>	1 mg/ml
<b>Full name</b>	Mitogen-activated protein kinase 3
<b>Synonyms</b>	Mitogen-activated protein kinase 3; MAPK3; ERK1; PRKM3; Mitogen-activated protein kinase 3; MAP kinase 3; MAPK 3; ERT2; Extracellular signal-regulated kinase 1; ERK-1; Insulin-stimulated MAP2 kinase; MAP kinase isoform p44; p44-MAPK; Microtubule-associated protein 2 kinase; p

**This product is for research use only, not for use in human, therapeutic or diagnostic procedure.**

### Background

The protein encoded by this gene is a member of the MAP kinase family. MAP kinases, also known as extracellular signal-regulated kinases (ERKs), act in a signaling cascade that regulates various cellular processes such as proliferation, differentiation, and cell cycle progression in response to a variety of extracellular signals. This kinase is activated by upstream kinases, resulting in its translocation to the nucleus where it phosphorylates nuclear targets. Alternatively spliced transcript variants encoding different protein isoforms have been described.

### Recommended Dilution

WB: 1: 500 - 1: 2000

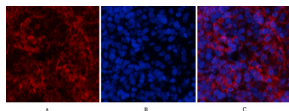
IHC-p: 1: 100 - 1: 300

IF: 1: 50 - 1: 200

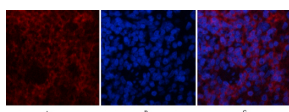
ELISA: 1: 20000

Not yet tested in other applications.

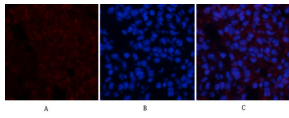
### Images



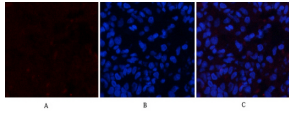
Immunofluorescence analysis of rat-lung tissue. 1,ERK 1/2 (phospho Thr202/Y204) Polyclonal Antibody(Red) was diluted at 1:200(4°C overnight). 2, Cy3 labeled Secondary antibody was diluted at 1:300(room temperature, 50min).3, Picture B: DAPI(blue) 10min. Picture A:Target. Picture B: DAPI. Picture C: merge of A+B



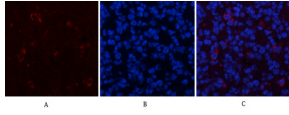
Immunofluorescence analysis of rat-lung tissue. 1,ERK 1/2 (phospho Thr202/Y204) Polyclonal Antibody(Red) was diluted at 1:200(4°C overnight). 2, Cy3 labeled Secondary antibody was diluted at 1:300(room temperature, 50min).3, Picture B: DAPI(blue) 10min. Picture A:Target. Picture B: DAPI. Picture C: merge of A+B



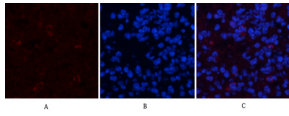
Immunofluorescence analysis of rat-spleen tissue. 1, ERK 1/2 (phospho Thr202/Y204) Polyclonal Antibody (Red) was diluted at 1:200 (4°C overnight). 2, Cy3 labeled Secondary antibody was diluted at 1:300 (room temperature, 50min). 3, Picture B: DAPI (blue) 10min. Picture A: Target. Picture B: DAPI. Picture C: merge of A+B



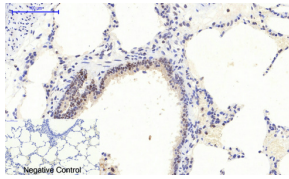
Immunofluorescence analysis of rat-spleen tissue. 1, ERK 1/2 (phospho Thr202/Y204) Polyclonal Antibody (Red) was diluted at 1:200 (4°C overnight). 2, Cy3 labeled Secondary antibody was diluted at 1:300 (room temperature, 50min). 3, Picture B: DAPI (blue) 10min. Picture A: Target. Picture B: DAPI. Picture C: merge of A+B



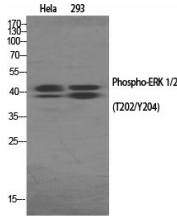
Immunofluorescence analysis of mouse-spleen tissue. 1, ERK 1/2 (phospho Thr202/Y204) Polyclonal Antibody (Red) was diluted at 1:200 (4°C overnight). 2, Cy3 labeled Secondary antibody was diluted at 1:300 (room temperature, 50min). 3, Picture B: DAPI (blue) 10min. Picture A: Target. Picture B: DAPI. Picture C: merge of A+B



Immunofluorescence analysis of mouse-spleen tissue. 1, ERK 1/2 (phospho Thr202/Y204) Polyclonal Antibody (Red) was diluted at 1:200 (4°C overnight). 2, Cy3 labeled Secondary antibody was diluted at 1:300 (room temperature, 50min). 3, Picture B: DAPI (blue) 10min. Picture A: Target. Picture B: DAPI. Picture C: merge of A+B



Immunohistochemical analysis of paraffin-embedded Rat-lung tissue. 1, CYCS Polyclonal Antibody was diluted at 1:200 (4°C overnight). 2, Sodium citrate pH 6.0 was used for antibody retrieval (>98°C, 20min). 3, Secondary antibody was diluted at 1:200 (room temperature, 30min). Negative control was used by secondary antibody only.



Western Blot analysis of various cells using Phospho-ERK 1/2 (T202/Y204) Polyclonal Antibody

## Storage

-20°C for 1 year

501 Changsheng S Rd, Nanhu Dist, Jiaxing, Zhejiang, China

Tel: 86 21 31007137 | E-mail: [save@bt-laboratory.com](mailto:save@bt-laboratory.com) | [www.bt-laboratory.com](http://www.bt-laboratory.com)