

## ERK 5 Polyclonal Antibody

### Description

<b>Product type</b>	Primary Antibody
<b>Code</b>	BT-AP15459
<b>Host</b>	Rabbit
<b>Isotype</b>	IgG
<b>Size</b>	20ul, 50ul, 100ul
<b>Immunogen</b>	Recombinant Protein of ERK 5
<b>Mol wt</b>	N/A
<b>Species reactivity</b>	Human, Mouse, Rat
<b>Clonality</b>	Polyclonal
<b>Recommended application</b>	WB, IHC-p, IF
<b>Concentration</b>	N/A
<b>Full name</b>	Mitogen-activated protein kinase 7
<b>Synonyms</b>	Mitogen-activated protein kinase 7; MAPK7; BMK1; ERK5; PRKM7; Mitogen-activated protein kinase 7; MAP kinase 7; MAPK 7; Big MAP kinase 1; BMK-1; Extracellular signal-regulated kinase 5; ERK-5

This product is for research use only, not for use in human, therapeutic or diagnostic procedure.

### Background

The protein encoded by this gene is a member of the MAP kinase family. MAP kinases act as an integration point for multiple biochemical signals, and are involved in a wide variety of cellular processes such as proliferation, differentiation, transcription regulation and development. This kinase is specifically activated by mitogen-activated protein kinase kinase 5 (MAP2K5/MEK5). It is involved in the downstream signaling processes of various receptor molecules including receptor type kinases, and G protein-coupled receptors. In response to extracellular signals, this kinase translocates to cell nucleus, where it regulates gene expression by phosphorylating, and activating different transcription factors. Four alternatively spliced transcript variants of this gene encoding two distinct isoforms have been reported.

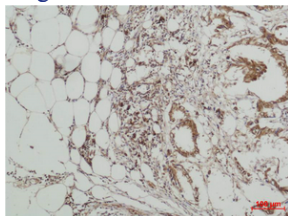
### Recommended Dilution

WB: 1: 1000 - 1: 2000

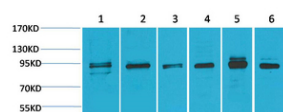
IHC: 1: 200 - 1: 500

Not yet tested in other applications.

### Images



Immunohistochemical analysis of paraffin-embedded human Breast carcinoma using ERK 5 Polyclonal Antibody.



Western blot analysis of 1) HeLa, 2) 293T, 3) 3T3, 4) Mouse Skeletal Muscle, 5) Rat Kidney, 6) Rat Skeletal Muscle using ERK 5 Polyclonal Antibody. Secondary antibody was diluted at 1:20000

### Storage

-20°C for 1 year

501 Changsheng S Rd, Nanhu Dist, Jiaxing, Zhejiang, China  
Tel: 86 21 31007137 | E-mail: [save@bt-laboratory.com](mailto:save@bt-laboratory.com) | [www.bt-laboratory.com](http://www.bt-laboratory.com)