

## ERK 8(Phospho Thr175/Y177) Polyclonal Antibody

### Description

<b>Product type</b>	Primary Antibody
<b>Code</b>	BT-AP15462
<b>Host</b>	Rabbit
<b>Isotype</b>	IgG
<b>Size</b>	20ul, 50ul, 100ul
<b>Immunogen</b>	The antiserum was produced against synthesized peptide derived from human ERK8 around the phosphorylation site of Thr175 and Tyr177. AA range:141-190
<b>Mol wt</b>	59832
<b>Species reactivity</b>	Human, Mouse
<b>Clonality</b>	Polyclonal
<b>Recommended application</b>	WB, IHC-p, IF, ELISA
<b>Concentration</b>	1 mg/ml
<b>Full name</b>	Mitogen-activated protein kinase 15
<b>Synonyms</b>	Mitogen-activated protein kinase 15; MAPK15; ERK7; ERK8; Mitogen-activated protein kinase 15; MAP kinase 15; MAPK 15; Extracellular signal-regulated kinase 7; ERK-7; Extracellular signal-regulated kinase 8; ERK-8

**This product is for research use only, not for use in human, therapeutic or diagnostic procedure.**

### Background

Catalytic activity:ATP + a protein = ADP + a phosphoprotein.,The N-terminal region (1-20) is the minimal region necessary for ubiquitination and further proteosomal degradation.,The TXY motif contains the threonine and tyrosine residues whose phosphorylation activates the MAP kinases.,enzyme regulation:Activated by threonine and tyrosine phosphorylation. Inhibited by dual specificity phosphatases, such as DUSP1.,In vitro, phosphorylates MBP.,PTM:Dually phosphorylated on Thr-175 and Tyr-177, which activates the enzyme. Autophosphorylated on threonine and tyrosine residues in vitro.,PTM:Ubiquitinated. Ubiquitination may allow its tight kinase activity regulation and rapid turnover. May be ubiquitinated by a SCF E3 ligase.,Belongs to the protein kinase superfamily. CMGC Ser/Thr protein kinase family. MAP kinase subfamily.,Contains 1 protein kinase domain.,subunit:Interacts with CSK/c-Src, ABL1, RET and TGFBI1.,tissue specificity:Widely expressed with a maximal expression in lung and kidney.,

### Recommended Dilution

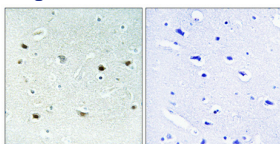
WB: 1: 500 - 1: 2000

IHC-p: 1: 100 - 1: 300

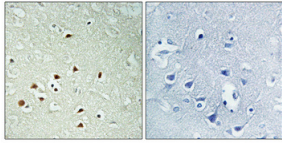
ELISA: 1: 5000

Not yet tested in other applications.

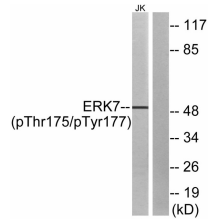
### Images



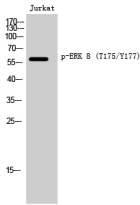
Immunohistochemical analysis of paraffin-embedded Human brain. Antibody was diluted at 1:100(4°C overnight). High-pressure and temperature Tris-EDTA,pH8.0 was used for antigen retrieval. Negative control (right) obtained from antibody was pre-absorbed by immunogen peptide.



Immunohistochemical analysis of paraffin-embedded Human brain. Antibody was diluted at 1:100(4°C overnight). High-pressure and temperature Tris-EDTA,pH8.0 was used for antigen retrieval. Negative control (right) obtained from antibody was pre-absorbed by immunogen peptide.



Western Blot analysis of Jurkat cells using Phospho-ERK 8 (T175/Y177) Polyclonal Antibody



Western blot analysis of lysates from Jurkat cells, using ERK8 (Phospho-Thr175+Tyr177) Antibody. The lane on the right is blocked with the phospho peptide.

### Storage

-20°C for 1 year

501 Changsheng S Rd, Nanhu Dist, Jiaxing, Zhejiang, China

Tel: 86 21 31007137 | E-mail: [save@bt-laboratory.com](mailto:save@bt-laboratory.com) | [www.bt-laboratory.com](http://www.bt-laboratory.com)