

Versican Polyclonal Antibody

Description

Product type	Primary Antibody
Code	BT-AP15463
Host	Rabbit
Isotype	IgG
Size	20ul, 50ul, 100ul
Immunogen	The antiserum was produced against synthesized peptide derived from human VCAN. AA range:532-581
Mol wt	372820
Species reactivity	Human, Rat, Mouse
Clonality	Polyclonal
Recommended application	WB, IHC-p, IF, ELISA
Concentration	1 mg/ml
Full name	Versican core protein
Synonyms	Versican core protein; VCAN; CSPG2; Versican core protein; Chondroitin sulfate proteoglycan core protein 2; Chondroitin sulfate proteoglycan 2; Glial hyaluronate-binding protein; GHAP; Large fibroblast proteoglycan; PG-M

This product is for research use only, not for use in human, therapeutic or diagnostic procedure.

Background

This gene is a member of the aggrecan/versican proteoglycan family. The protein encoded is a large chondroitin sulfate proteoglycan and is a major component of the extracellular matrix. This protein is involved in cell adhesion, proliferation, migration and angiogenesis and plays a central role in tissue morphogenesis and maintenance. Mutations in this gene are the cause of Wagner syndrome type 1. Multiple transcript variants encoding different isoforms have been found for this gene.

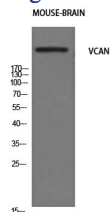
Recommended Dilution

IHC-p: 1: 100 - 1: 300

ELISA: 1: 10000

Not yet tested in other applications.

Images



Western Blot analysis of mouse-brain cells using Versican Polyclonal Antibody. Secondary antibody was diluted at 1:20000

Storage

-20°C for 1 year