

VN1R1 Polyclonal Antibody

Description

Product type	Primary Antibody
Code	BT-AP15492
Host	Rabbit
Isotype	IgG
Size	20ul, 50ul, 100ul
Immunogen	Synthesized peptide derived from human protein . at AA range: 150-230
Mol wt	N/A
Species reactivity	Human, Rat, Mouse
Clonality	Polyclonal
Recommended application	WB, ELISA
Concentration	1 mg/ml
Full name	Vomer nasal type-1 receptor 1
Synonyms	Vomer nasal type-1 receptor 1 ;G-protein coupled receptor GPCR24;hGPCR24;V1r-like receptor 1;V3r-related gene protein;Vomer nasal olfactory receptor chromosome 19 subtype I member 1

This product is for research use only, not for use in human, therapeutic or diagnostic procedure.

Background

Pheromones are chemical signals that elicit specific behavioral responses and physiologic alterations in recipients of the same species. The protein encoded by this gene is similar to pheromone receptors and is primarily localized to the olfactory mucosa. An alternate splice variant of this gene is thought to exist, but its full length nature has not been determined.

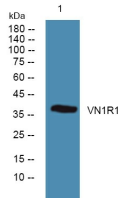
Recommended Dilution

WB: 1: 500 - 1: 2000

ELISA: 1: 5000 - 1: 20000

Not yet tested in other applications.

Images



Western blot analysis of lysates from KB cells, primary antibody was diluted at 1:1000, 4°C overnight

Storage

-20°C for 1 year