

WAVE1(Phospho Tyr125) Polyclonal Antibody

Description

Product type	Primary Antibody
Code	BT-AP15521
Host	Rabbit
Isotype	IgG
Size	20ul, 50ul, 100ul
Immunogen	The antiserum was produced against synthesized peptide derived from human WAVE1 around the phosphorylation site of Tyr125. AA range:91-140
Mol wt	61652
Species reactivity	Human, Mouse, Rat
Clonality	Polyclonal
Recommended application	WB, IHC-p, IF, ICC, ELISA
Concentration	1 mg/ml
Full name	Wiskott-Aldrich syndrome protein family member 1
Synonyms	Wiskott-Aldrich syndrome protein family member 1; WASF1; KIAA0269; SCAR1; WAVE1; Wiskott-Aldrich syndrome protein family member 1; WASP family protein member 1; Protein WAVE-1; Verprolin homology domain-containing protein 1

This product is for research use only, not for use in human, therapeutic or diagnostic procedure.

Background

The protein encoded by this gene, a member of the Wiskott-Aldrich syndrome protein (WASP)-family, plays a critical role downstream of Rac, a Rho-family small GTPase, in regulating the actin cytoskeleton required for membrane ruffling. It has been shown to associate with an actin nucleation core Arp2/3 complex while enhancing actin polymerization in vitro. Wiskott-Aldrich syndrome is a disease of the immune system, likely due to defects in regulation of actin cytoskeleton. Multiple alternatively spliced transcript variants encoding the same protein have been found for this gene.

Recommended Dilution

WB: 1: 500 - 1: 2000

IHC-p: 1: 100 - 1: 300

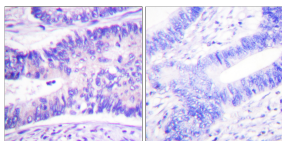
IF: 1: 200 - 1: 1000

ICC: 1: 200 - 1: 1000

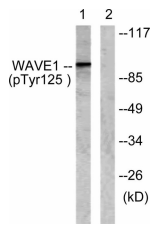
ELISA: 1: 5000

Not yet tested in other applications.

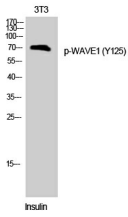
Images



Immunohistochemistry analysis of paraffin-embedded human colon carcinoma, using WAVE1 (Phospho-Tyr125) Antibody. The picture on the right is blocked with the phospho peptide.



Western Blot analysis of 3T3 cells using Phospho-WAVE1 (Y125) Polyclonal Antibody



Western blot analysis of lysates from NIH/3T3 cells treated with Insulin 0.01U/ml 15', using WAVE1 (Phospho-Tyr125) Antibody. The lane on the right is blocked with the phospho peptide.

Storage

-20°C for 1 year

501 Changsheng S Rd, Nanhu Dist, Jiaxing, Zhejiang, China

Tel: 86 21 31007137 | E-mail: save@bt-laboratory.com | www.bt-laboratory.com