

## WAVE4 Polyclonal Antibody

### Description

<b>Product type</b>	Primary Antibody
<b>Code</b>	BT-AP15525
<b>Host</b>	Rabbit
<b>Isotype</b>	IgG
<b>Size</b>	20ul, 50ul, 100ul
<b>Immunogen</b>	The antiserum was produced against synthesized peptide derived from human WASF4. AA range:190-239
<b>Mol wt</b>	68189
<b>Species reactivity</b>	Human, Rat, Mouse
<b>Clonality</b>	Polyclonal
<b>Recommended application</b>	IHC-p, IF, ELISA
<b>Concentration</b>	1 mg/ml
<b>Full name</b>	Putative Wiskott-Aldrich syndrome protein family member 4
<b>Synonyms</b>	Putative Wiskott-Aldrich syndrome protein family member 4

**This product is for research use only, not for use in human, therapeutic or diagnostic procedure.**

### Background

WASF4P (WAS protein family member 4, pseudogene) is a pseudogene belonging to the family of genes encoding Wiskott-Aldrich syndrome (WAS) proteins, which are involved in the transmission of signals to the actin cytoskeleton. Wiskott-Aldrich syndrome is a disease of the immune system. This pseudogene, which is apparently not transcribed, most closely resembles WASF4P encoding the WAS protein family member 2, which is located on chromosome 1.

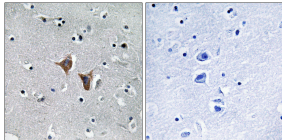
### Recommended Dilution

IHC-p: 1: 100 - 1: 300

ELISA: 1: 10000

Not yet tested in other applications.

### Images



Immunohistochemistry analysis of paraffin-embedded human brain, using WASF4 Antibody. The picture on the right is blocked with the synthesized peptide.

### Storage

-20°C for 1 year