

Wee 1(Phospho Ser53) Polyclonal Antibody

Description

Product type	Primary Antibody
Code	BT-AP15530
Host	Rabbit
Isotype	IgG
Size	20ul, 50ul, 100ul
Immunogen	The antiserum was produced against synthesized peptide derived from human WEE1 around the phosphorylation site of Ser53. AA range:19-68
Mol wt	71597
Species reactivity	Human, Mouse, Rat
Clonality	Polyclonal
Recommended application	IHC-p, IF, ELISA
Concentration	1 mg/ml
Full name	Wee1-like protein kinase
Synonyms	Wee1-like protein kinase; WEE1; Wee1-like protein kinase; WEE1hu; Wee1A kinase

This product is for research use only, not for use in human, therapeutic or diagnostic procedure.

Background

This gene encodes a nuclear protein, which is a tyrosine kinase belonging to the Ser/Thr family of protein kinases. This protein catalyzes the inhibitory tyrosine phosphorylation of CDC2/cyclin B kinase, and appears to coordinate the transition between DNA replication and mitosis by protecting the nucleus from cytoplasmically activated CDC2 kinase.

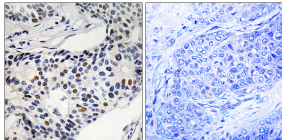
Recommended Dilution

IHC-p: 1: 100 - 1: 300

ELISA: 1: 20000

Not yet tested in other applications.

Images



Immunohistochemistry analysis of paraffin-embedded human breast carcinoma, using WEE1 (Phospho-Ser53) Antibody. The picture on the right is blocked with the phospho peptide.

Storage

-20°C for 1 year