

Wee1(Phospho Ser642) Polyclonal Antibody

Description

Product type	Primary Antibody
Code	BT-AP15533
Host	Rabbit
Isotype	IgG
Size	20ul, 50ul, 100ul
Immunogen	The antiserum was produced against synthesized peptide derived from human WEE1 around the phosphorylation site of Ser642. AA range:597-646
Mol wt	71597
Species reactivity	Human, Mouse, Rat
Clonality	Polyclonal
Recommended application	WB, ELISA
Concentration	1 mg/ml
Full name	Wee1-like protein kinase
Synonyms	Wee1-like protein kinase; WEE1; Wee1-like protein kinase; WEE1hu; Wee1A kinase

This product is for research use only, not for use in human, therapeutic or diagnostic procedure.

Background

This gene encodes a nuclear protein, which is a tyrosine kinase belonging to the Ser/Thr family of protein kinases. This protein catalyzes the inhibitory tyrosine phosphorylation of CDC2/cyclin B kinase, and appears to coordinate the transition between DNA replication and mitosis by protecting the nucleus from cytoplasmically activated CDC2 kinase.

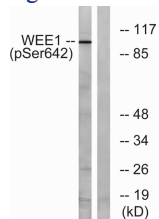
Recommended Dilution

WB: 1: 500 - 1: 2000

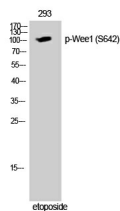
ELISA: 1: 5000

Not yet tested in other applications.

Images



Western Blot analysis of 293 cells using Phospho-Wee1 (S642) Polyclonal Antibody



Western blot analysis of lysates from 293 cells treated with etoposide 25uM 60', using WEE1 (Phospho-Ser642) Antibody. The lane on the right is blocked with the phospho peptide.

Storage

-20°C for 1 year

501 Changsheng S Rd, Nanhu Dist, Jiaxing, Zhejiang, China

Tel: 86 21 31007137 | E-mail: save@bt-laboratory.com | www.bt-laboratory.com