

WWOX(Phospho Tyr33) Polyclonal Antibody

Description

Product type	Primary Antibody
Code	BT-AP15561
Host	Rabbit
Isotype	IgG
Size	20ul, 50ul, 100ul
Immunogen	The antiserum was produced against synthesized peptide derived from human WWOX around the phosphorylation site of Tyr33. AA range:18-67
Mol wt	46677
Species reactivity	Human, Mouse
Clonality	Polyclonal
Recommended application	WB, IHC-p, IF, ELISA
Concentration	1 mg/ml
Full name	WW domain-containing oxidoreductase
Synonyms	WW domain-containing oxidoreductase; WWOX; FOR; WOX1; WW domain-containing oxidoreductase; Fragile site FRA16D oxidoreductase

This product is for research use only, not for use in human, therapeutic or diagnostic procedure.

Background

N/A

Recommended Dilution

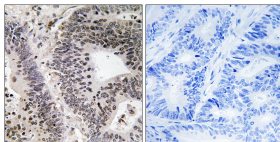
WB: 1: 500 - 1: 2000

IHC-p: 1: 100 - 1: 300

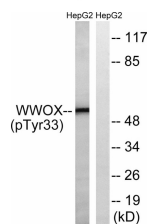
ELISA: 1: 10000

Not yet tested in other applications.

Images



Immunohistochemistry analysis of paraffin-embedded human colon carcinoma, using WWOX (Phospho-Tyr33) Antibody. The picture on the right is blocked with the phospho peptide.



Western blot analysis of lysates from HepG2 cells treated with PMA 125ng/ml 30', using WWOX (Phospho-Tyr33) Antibody. The lane on the right is blocked with the phospho peptide.

Storage

-20°C for 1 year