

WWTR1 Polyclonal Antibody

Description

| | |
|--------------------------------|--|
| Product type | Primary Antibody |
| Code | BT-AP15563 |
| Host | Rabbit |
| Isotype | IgG |
| Size | 20ul, 50ul, 100ul |
| Immunogen | Synthesized peptide derived from part region of human protein |
| Mol wt | N/A |
| Species reactivity | Human, Mouse |
| Clonality | Polyclonal |
| Recommended application | WB, ELISA |
| Concentration | 1 mg/ml |
| Full name | WW domain-containing transcription regulator protein 1 |
| Synonyms | WW domain-containing transcription regulator protein 1 ;Transcriptional coactivator with PDZ-binding motif |

This product is for research use only, not for use in human, therapeutic or diagnostic procedure.

Background

Binds to transcription factors via its WW domain.,The PDZ-binding motif is essential for stimulated gene transcription. It localizes the protein into both punctate nuclear foci and plasma membrane-associated complexes.,Functions as a transcriptional coactivator.,PTM:Phosphorylated. Phosphorylation results in the inhibition of transcriptional coactivation through YWHAZ-mediated nuclear export.,Contains 1 WW domain.,subcellular location:Concentrates along specific portions of the plasma membrane, and accumulates in punctate nuclear bodies. When phosphorylated, is retained in cytoplasm by YWHAZ.,subunit:Binds to SLC9A3R2 via the PDZ motif at the plasma membrane. Binds to YWHAZ in vivo and in vitro through the phosphoserine-binding motif RSHSSP.,tissue specificity:Highly expressed in kidney, heart, placenta and lung.,

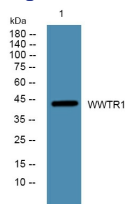
Recommended Dilution

WB: 1: 500 - 1: 2000

ELISA: 1: 5000 - 1: 20000

Not yet tested in other applications.

Images



Western blot analysis of lysates from K562 cells, primary antibody was diluted at 1:1000, 4°C overnight

Storage

-20°C for 1 year