

FCN2 Polyclonal Antibody

Description

Product type	Primary Antibody
Code	BT-AP15564
Host	Rabbit
Isotype	IgG
Size	20ul, 50ul, 100ul
Immunogen	Synthesized peptide derived from part region of human protein
Mol wt	N/A
Species reactivity	Human, Rat, Mouse
Clonality	Polyclonal
Recommended application	WB, ELISA
Concentration	1 mg/ml
Full name	Ficolin-2
Synonyms	Ficolin-2 ;37 kDa elastin-binding protein;Collagen/fibrinogen domain-containing protein 2;EBP-37;Ficolin-B;Ficolin-beta;Hucolin;L-ficolin;Serum lectin p35

This product is for research use only, not for use in human, therapeutic or diagnostic procedure.

Background

The product of this gene belongs to the ficolin family of proteins. This family is characterized by the presence of a leader peptide, a short N-terminal segment, followed by a collagen-like region, and a C-terminal fibrinogen-like domain. This gene is predominantly expressed in the liver, and has been shown to have carbohydrate binding and opsonic activities. Alternatively spliced transcript variants encoding different isoforms have been identified.

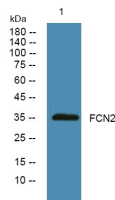
Recommended Dilution

WB: 1: 500 - 1: 2000

ELISA: 1: 5000 - 1: 20000

Not yet tested in other applications.

Images



Western blot analysis of lysates from A431 cells, primary antibody was diluted at 1:1000, 4°C overnight

Storage

-20°C for 1 year