

XCL2 Polyclonal Antibody

Description

Product type	Primary Antibody
Code	BT-AP15566
Host	Rabbit
Isotype	IgG
Size	20ul, 50ul, 100ul
Immunogen	Synthesized peptide derived from part region of human protein
Mol wt	N/A
Species reactivity	Human, Rat, Mouse
Clonality	Polyclonal
Recommended application	WB, ELISA
Concentration	1 mg/ml
Full name	Cytokine SCM-1 beta
Synonyms	Cytokine SCM-1 beta ;C motif chemokine 2;XC chemokine ligand 2

This product is for research use only, not for use in human, therapeutic or diagnostic procedure.

Background

Chemotactic activity for lymphocytes but not for monocytes or neutrophils.,online information:XCL2 entry,Belongs to the intercrine gamma family.,

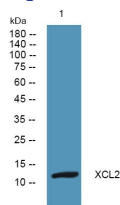
Recommended Dilution

WB: 1: 500 - 1: 2000

ELISA: 1: 5000 - 1: 20000

Not yet tested in other applications.

Images



Western blot analysis of lysates from K562 cells, primary antibody was diluted at 1:1000, 4°C overnight

Storage

-20°C for 1 year